

Building Dialog Boxes
WordPerfect Magazine
By Allen Biehl, Macros by Karen Baldwin-Porter and Roger Gagon

Dialog boxes are a great addition to any macro. They attract more attention than a one-line prompt displayed at the bottom of the screen. They pop up in front of a user, demanding to be noticed (see Figure 1 below).

They are not, however, the easiest things to create. Remembering all of the parameters can be a challenge for anyone. The included DIALOG.WPM macro helps make the task of creating dialog boxes much easier.

The macro helps you create dialog boxes by listing all of the possible command parameters in a single dialog box. If certain parameters or options don't apply to a particular command, they're grayed out so you can't select them.

Note: The macro discussed in this article only helps you build the dialog box. It doesn't create an entire macro for you. To effectively use the dialog boxes in macros you create, you'll need to have a good understanding of macro programming.

Using the Dialog Box Generator

Since macros are created in normal document screens, you can run the dialog macro from any document screen. Just press Play Macro (Alt+F10), type "dialog," press (Enter), and the message box shown in Figure 2 below appears on your screen.

The macro is designed to be run at least three times, since it takes three steps to create a dialog box. First, you must use the DLGCREATE command to define the size and position of the box. Then, you need to use one or more DLGCONTROL commands to add text, buttons, lists and other items to the box. Finally, you complete your dialog box with a DLGEND command.

For now, press (1) DLGCREATE, and the dialog box shown in Figure 3 below appears on your screen. This dialog box lets you define all of the parameters for the dialog box you're creating.

If you've already created a few macros with dialog boxes, most of these parameters should be familiar to you. For example, options 4 and 5 let you determine the position of the dialog box on your screen, and options 6 and 7 let you size the dialog box. The variable name (option 1) defaults to "Result," since this name is commonly used for the dialog box variable, but you're free to change this to anything you like. Option (2) Title lets you title the dialog box and option (3) Style lets you apply up to seven different styles to your dialog box.

Note: You can leave the width, height, horizontal position and vertical position options set to 0 to have WordPerfect determine the sizes and positions for you. If you're not familiar with some of these parameters, I'd suggest later reading the information about the DLGCREATE, DLGCONTROL and DLGEND commands in the macro manual or online Help.

To read about these commands, after you quit the macro you can choose Help from the pull-down menu, press (M) Macros, highlight Macro Commands Index A-L, press (Enter), (N) Name Search, type dlgcreate or the desired command and press (Enter) twice.

After making the desired changes in the Dialog Create dialog box, choose OK and the macro inserts the first macro command with all of its parameters on the document screen.

To create the second command, run the macro again, but press (2) DLGCONTROL to display the Dialog Control dialog box shown in Figure 4 below. Option (1) Dialog Control Type lets you choose from the 11 available dialog control types, such as checkboxes, push buttons and drop lists. Again, if you're not familiar with some of these options and their parameters, read the online macros Help.

You'll notice that depending on the control type you choose in option 1, some of the other styles or parameters are grayed out, so you can't select them. Not all parameters apply to each of the control types. For example, the CtrlLabel! doesn't use a variable name, so option (2) Variable Name is grayed out. If you were to set the dialog control type to CtrlCheckBox!, the (7) Width and (8) Height options would be grayed out, since you can't set the width and height of a checkbox.

When finished, choose OK, and the macro inserts the first DLGCONTROL macro command with all of its parameters on the document screen. Now run the macro as many times as you need to insert other DLGCONTROL commands.

Finally, use the dialog box generator to insert the DLGEND command. (Of course, you can just type this one, since it doesn't require any parameters, but hey, this is a full-service macro!)

How the Macro Works

Since this macro is pretty complicated, I'll briefly go over how it works. Lines 1-11 make some variable assignments, then line 12 displays the menu list shown in Figure 2.

If you choose Cancel, line 13 cancels the macro. If you choose (3) DLGEND, line 14 inserts the DLGEND command and then quits.

If you choose (1) DLGCREATE, lines 15-28 display the Dialog Create dialog box shown in Figure 3. After choosing OK, lines 29-34 type the first part of the DLGCREATE command. (The balance of the command is typed on lines 74-78.)

If you choose (2) DLGCONTROL, lines 35-54 display the Dialog Control dialog box shown in Figure 4. Each time you make a selection in this dialog box, the macro executes the series of IF statements on lines 55-67, which determine the items in the dialog box to gray out. As long as you choose anything but the OK button, line 68 redirects macro execution back to line 36 to update the dialog box.

When you finally choose OK, lines 69-72 type the first part of the DLGCONTROL command. The balance of the command is typed on lines 74-78.

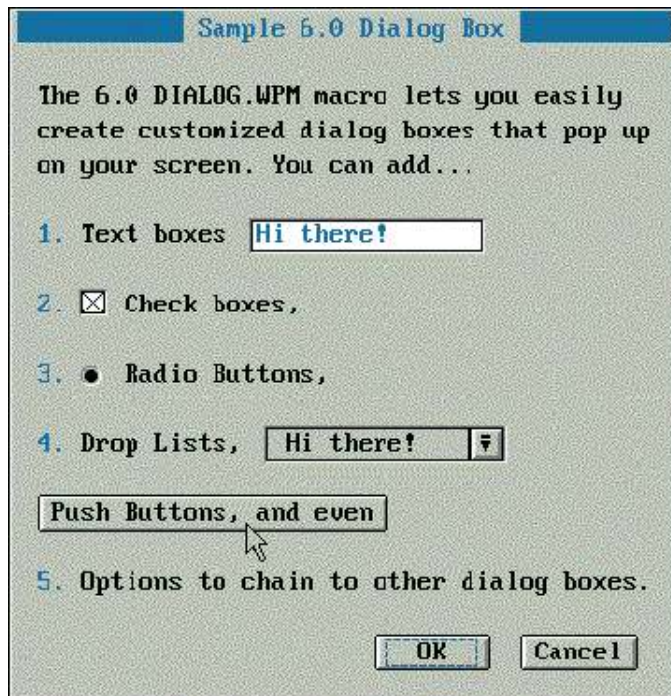


Figure 1



Figure 2

Dialog Create

Variable Name

Title

Style

- ☐ DlgNoOK!
- ☐ DlgNoCancel!
- ☐ DlgNoBorder!
- ☐ DlgNoShadow!
- ☐ DlgExit!
- ☐ DlgNoClear!
- ☐ DlgInactive!

Horizontal Position 0 ▲▼

Vertical Position 0 ▲▼

width 0 ▲▼

Height 0 ▲▼

OK Cancel

Figure 3

Dialog Control

1. Dialog Control Type [CtrlLabel! ↓]

2. Variable Name

3. Title

4. Style

<input type="checkbox"/> StyOK!	<input type="checkbox"/> StyNoScroll!
<input type="checkbox"/> StyCancel!	<input type="checkbox"/> StyNoNumber!
<input type="checkbox"/> StySigned!	<input type="checkbox"/> StyDancing!
<input type="checkbox"/> StyCounter!	<input type="checkbox"/> StyNoPeriod!
<input type="checkbox"/> StyNoSpaces!	<input type="checkbox"/> StyGray!
<input type="checkbox"/> StyNoBox!	<input type="checkbox"/> StyMnemonic!
<input type="checkbox"/> StyNoSort!	<input type="checkbox"/> StyInitial!
<input type="checkbox"/> stychild!	<input type="checkbox"/> StyDefault!

5. Horizontal Position 0 ▲▼ 7. Width 0 ▲▼

6. Vertical Position 0 ▲▼ 8. Height 0 ▲▼

OK Cancel

Figure 4